

data**db**business

**dbEddie**

**SAP® & Confluence® Skill**

**AI Expert System Solutions**



# What Do You Need to Know?



## Executive Summary

Enterprises face a critical challenge: decades of fragmented SAP® knowledge scattered across helpdesk tickets, obsolete documentation, and complex codebases—with original developers long gone. This knowledge drain forces teams into constrained decision-making during strategic projects and migrations, creating unnecessary risks and delays. Our AI-powered SAP BW® and SAP S/4® expert system, directly connected to your live BW and documentation systems, transforms scattered institutional knowledge into instant, expert-level analysis with real-time metadata intelligence, eliminating consultant dependency while accelerating modernization



Create a user documentation for program ZHELLO from SAP system QBW on confluence space BWDOC



I'll get the ABAP program and create comprehensive user documentation on Confluence.



Ran get\_abap\_program

Perfect! Now, I will create a page [Program ZHELLO](#) on Confluence.



Explain the business logic of metric "Marketing Campaign ROI" in query Z\_MARKETING.



I'll retrieve the query definition and analyze the underlying transformations.



Ran get\_bw\_query



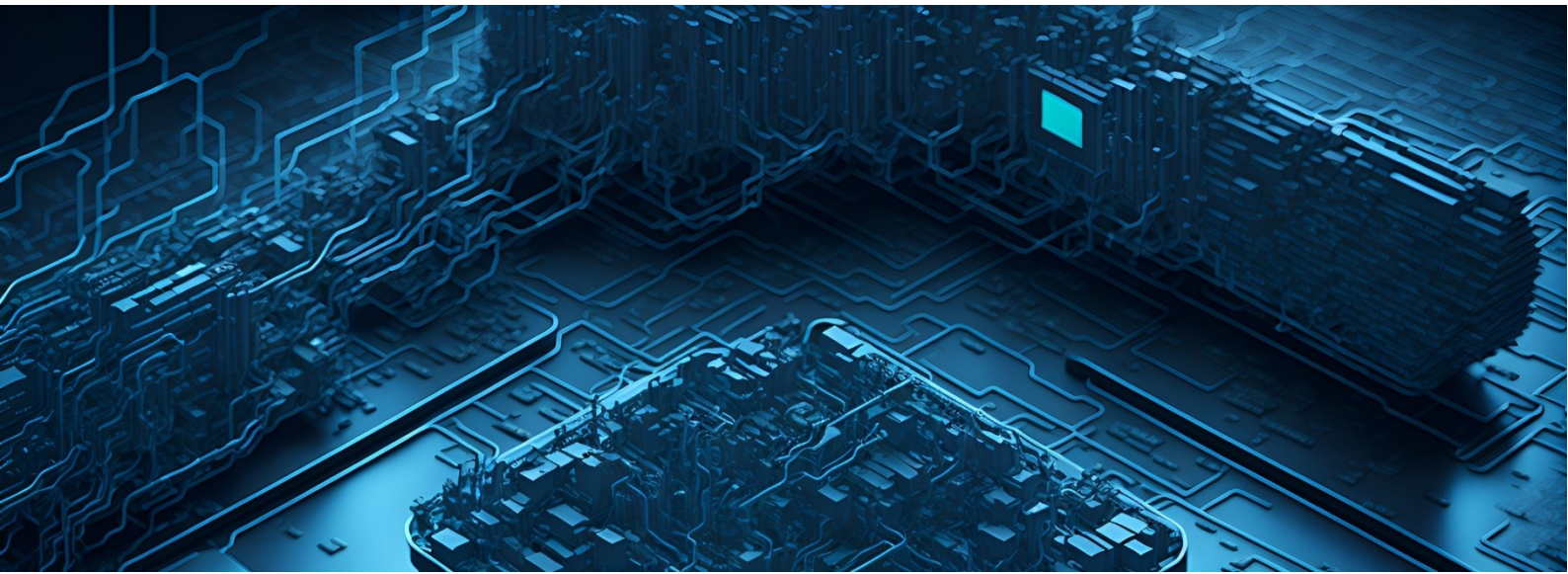
Ran ...

Your metric is based on formula  $ROI = \frac{Net\ Profit}{Cost} * 100.$

The data sources are: 0FI\_ACDOCA\_10, ...



# What We Solve



## The Challenge

**Knowledge Drain** - Critical SAP BW® and SAP S/4® expertise walking out the door with retiring staff

**Migration Pressure** - Cloud-first mandates forcing hasty SAP BW® decommissioning decisions

**Consultant Dependency** - Expensive external experts for basic SAP® analysis and documentation

**Complexity** - Overwhelming complexity from multiple projects

## Our Solution

**AI SAP BW® Expert** - Instant access to expert-level SAP BW® knowledge and analysis

**Complete Visibility** - Full metadata access across all major SAP BW® objects on your systems

**Confluence® Cloud** - Automated generation of technical and business documentation

**Systems United** - Combine information from multiple systems with our AI agent

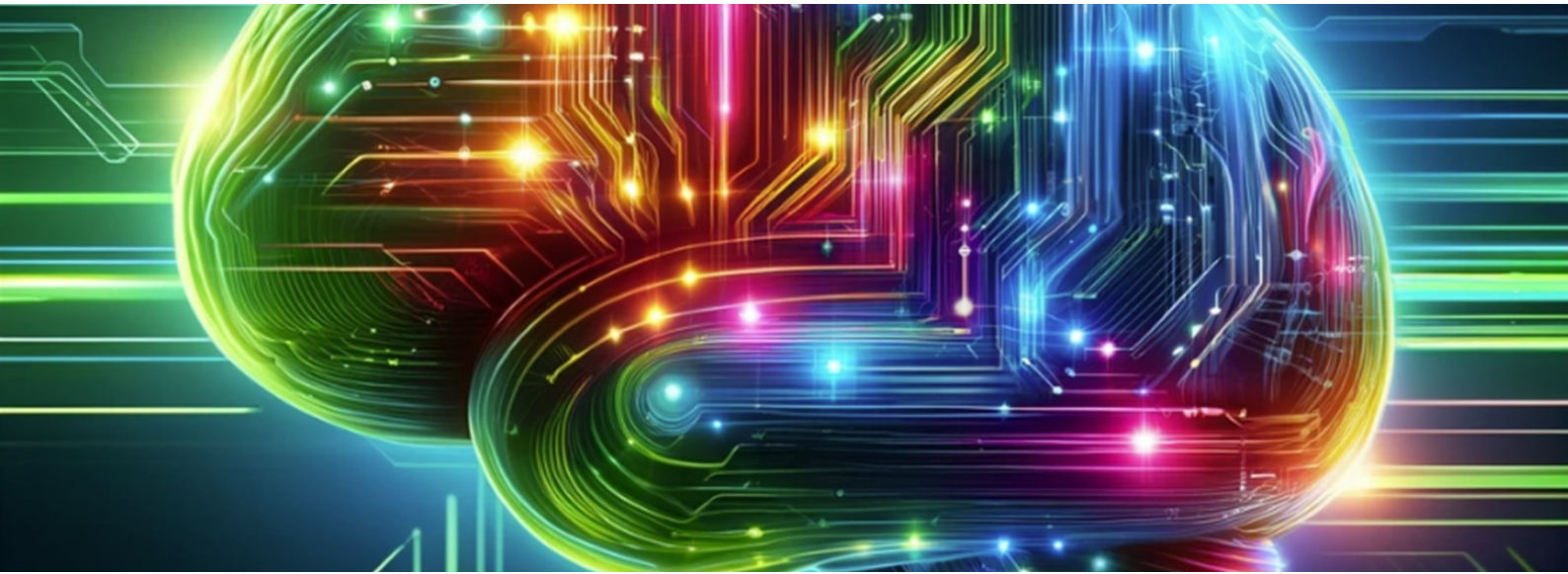
**Complete Solution** - We deliver a package of web-frontend and MCP servers

**Enterprise Security** - Azure AD® integration and OAuth2.0 secured system access

**Deployment** - Deploy our docker-based solution where you need it



# User Stories We Support



User stories demonstrate the broad applicability of our Business System Explorer across enterprise roles

As an **architect**, I want to understand data flows across multiple SAP systems so I can create a unified enterprise data architecture roadmap

As an **enterprise architect**, I need to analyze legacy system complexity so I can prioritize which systems to modernize first based on technical debt and business impact

As a **compliance officer**, I want comprehensive data lineage documentation that so I can quickly respond to GDPR data subject requests

As a **business analyst**, I need clear documentation of data flows so I can validate business requirements against technical implementation

As a **migration PM**, I need detailed impact analysis showing all downstream effects of decommissioning legacy BW objects so I can create realistic migration timelines and budgets

As a **business user**, I need to understand KPIs and their origin to make sound decisions

As a **data engineer**, I need to identify bottlenecks in our BW process chains so I can optimize ETL performance and reduce processing windows

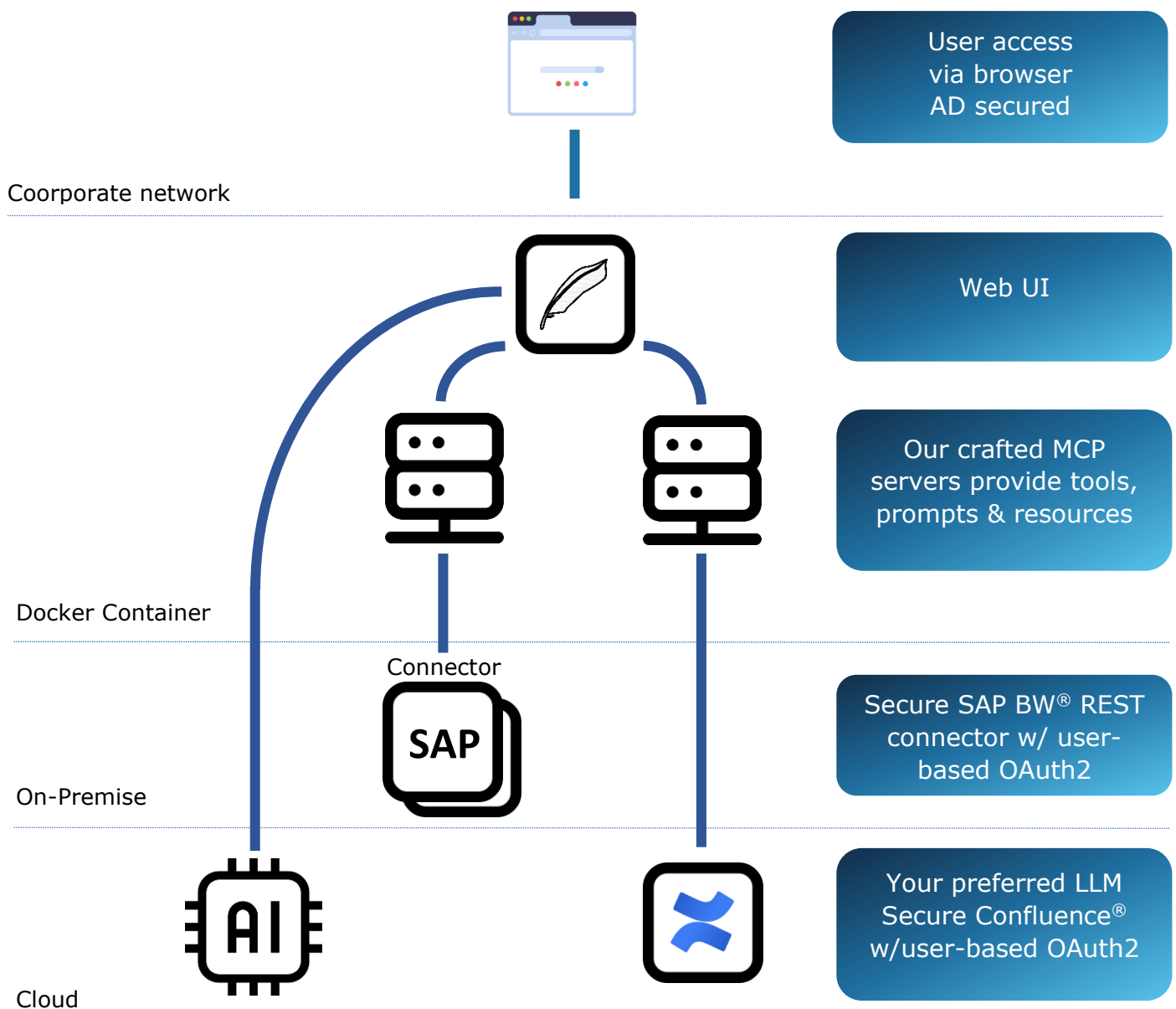
As a **software developer**, I need to review and analyze huge code-bases built by others to integrate my own work seamlessly

As an **external consultant**, I need to quickly understand a client's BW environment without spending weeks in discovery so I can provide accurate project

As **technical support**, I need smart alerts and deep insights to keep the system up and running and to resolve incident timely



# The Architecture We Use



# Our Company



Data Business GmbH was founded in 2016 to provide specialized consulting services in data engineering and related technologies. We focus on practical solutions involving data Lakehouse architectures, data engineering, analytics, and enterprise resource planning using SAP® products like SAP® S4/HANA, SAP® BW4/HANA, and open-source technologies. As your consulting partner, we work closely with you to develop customized IT solutions that address your specific business requirements.

We understand that effective data management is crucial for informed business decisions. Our approach is to provide reliable consulting services that help organizations better utilize their data through sound engineering practices and appropriate analytical solutions. We're committed to delivering practical results that meet each client's unique needs and technical environment.

Data Business offers consulting expertise in four key service areas:

- **Data Engineering:** As a specialized SAP consulting firm, we focus on data engineering solutions that make a real difference. We work closely with our clients to develop tailored information systems that support better decision-making and drive meaningful business results. Our boutique approach ensures personalized attention and solutions designed specifically for each client's unique challenges.
- **Data Analytics:** We provide practical analytics services to help organizations better understand and utilize their data. Our consultants work closely with clients to identify key business questions and develop focused analytical approaches. We extract meaningful insights from your data and present them through clear, actionable reports that support informed decision-making and business planning.
- **Data Science and AI:** We help organizations apply data science techniques to better understand and utilize their business data. We work with clients to identify where methods like data mining, machine learning, and analytics can provide valuable insights. Our consultants focus on practical applications that align with your specific business needs.
- **Data Platform Solutions (Cloud/OnPrem):** We provide consulting services for data platform design and implementation. We help organizations develop practical solutions using on-premise, cloud, or hybrid approaches based on their specific requirements. Our consultants focus on delivering secure, reliable platforms that integrate effectively with existing systems and support your business objectives.

# Data Business Team



**Johannes Iwanow**

**Chief Executive Officer**

SAP S4/HANA® Integration and BI

25+ years cross industry experience

Touristic, Banking, Logistics, Consumer

M.Sc. in Business Administration

**Mark Klein**

**Chief Operating Officer**

SAP HANA® Integration and BI

25+ years cross industry experience

Banking, Logistic, Consumer

M.Sc. in Mathematics



**Pralay Ahluwalia**

**CFO | Partner Data Management & Analytics**

Senior Business Architect

25+ years cross industry experience

Banking, Pharma, IT

M.Sc. in Finance & Risk / B.Sc. in Engineering

**Roman Doubrava**

**Co-Founder | AI & HPC Research**

Hybrid Cloud & Data Warehousing

SAP® HANA & Infrastructure

Full Stack Architect

IT, Banking, Energy



SAP S/4HANA®, SAP BW/4HANA®, SAP® BWonHANA are the trademarks or registered trademark of SAP SE or its affiliates in Germany and in several other countries. Anthropic and Claude are the trademarks or registered trademark of Anthropic PBC. Azure and Microsoft are registered trademark of Microsoft Corporation. Confluence and Jira are registered trademarks of Atlassian Pty Ltd.